

# GROUND RESISTANCE TESTERS

## Multi-Function

Special product features

### Model 6471

## Test ground resistance without the need of auxiliary rods!



AC Current Probes  
Model SR182



The Model 6471 provides a fast and easy way to measure the value of the earth/ground using the 2 Clamp method (no auxiliary rods needed).



### SPECIFICATIONS



<b>MODEL</b>	<b>6471</b>
<b>ELECTRICAL</b>	
<b>2 Clamp Measurement</b>	
Range	0.10 to 500Ω
Resolution	0.01 to 1Ω
Measurement Frequency	Auto: 1611Hz Manual: 128Hz-1367Hz-1611Hz-1758Hz
<b>3-Point Measurement</b>	
Range (Auto-Ranging)	0.09Ω to 99.9kΩ
Resolution	0.01Ω to 100Ω
Test Voltage	Nominal 16 or 32Vrms user selectable
Resistance Measurement Frequency	41 to 513Hz automatic or user selectable
Test Current	Up to 250mA
Accuracy	±2% of Reading + 1ct @ 128Hz
<b>Soil Resistivity 4-Point Measurement</b>	
Test Method	Wenner or Schlumberger selectable with automatic calculation in Ω-meters
Range (Auto-Ranging)	0.01 to 99.99kΩ; ρ max: 999kΩm
Resolution	0.001 to 10Ω
Test Voltage	16 or 32V user selectable
Frequency	From 41 to 128Hz selectable
<b>External Voltage Measurement</b>	
Range (Auto-Ranging)	0.1 to 65.0V <sub>ac/dc</sub> – DC to 440Hz
Accuracy	±2% of Reading + 1ct
<b>Resistance Measurement (Bond Testing)</b>	
Measurement Type	2-Pole (with lead resistance compensation) or 4-Pole (Kelvin sensing) user selectable
Range (Auto-Ranging)	2-Pole 0.02 to 99.99kΩ; 4-Pole 0.02 to 99.99kΩ
Accuracy	±2% of Reading + 2cts
Test Voltage	16V <sub>dc</sub> (+, - or auto polarity)
Test Current	Up to 250mA max
<b>Data Storage</b>	
Memory Capacity	512 test results (64KB)
Communication	Optically Isolated USB
<b>Power Source</b>	
Recharging Source	9.6V rechargeable battery pack (included) 110/220V, 50/60Hz external charger with 18V <sub>dc</sub> , 1.9A output



### TEST KITS

**300 ft Kit: Catalog #2135.50**  
Includes meter, carrying bag for meter, carrying bag for kit, two 300 ft color-coded leads on spools (red/blue), two 5 ft color-coded leads (red/blue), two 100 ft color-coded leads (hand-tied, green/black), two SR182 current probes, rechargeable NiMH batteries, optical USB cable, power adapter 110/240V with power cord 115V US, four T-shaped auxiliary ground electrodes, set of five spaded lugs, one 100 ft tape measure, and USB stick supplied with DataView® software, ground tester workbook and user manual.

### ACCESSORIES

► **MN82 current probe (2mA to 10Arms)**  
Catalog #2135.71 (optional)



► **Reel Caddy**  
Catalog #2135.85 (optional)  
Set of two, for use with ground kit spools

### PRODUCT INCLUDES

► **SR182 current probe (0.5mA to 40Arms)**  
Catalog #2135.72



# Model 6471

## Large Functional Displays

### ► FEATURES

- Ground Resistance testing using the 2 clamp method (no auxiliary rods needed)
- 2- and 4-Point Bond Resistance/Continuity measurement (DC Resistance) with automatic polarity reversal
- 3-Point Fall-of-Potential measurement with manual or automatic frequency selection
- 4-Point Soil Resistivity measurement with automatic calculation of Rho ( $\rho$ ) and user selection of the Wenner or Schlumberger test method
- 3-Point Earth Coupling measurement
- Manual and Automatic frequency scan from 41 to 513Hz for optimum test accuracy in electrically noisy environments
- Selectable test voltage of 16 or 32V up to 250mA of test current
- Auto Power OFF feature
- Automatic recognition of all electrode connections and their resistance value
- Stores up to 512 complete test results in internal memory
- Display with automatic backlight when entering a function
- Optically isolated USB communication cable included
- Rechargeable NiMH batteries from wall charger or vehicle power
- Rugged dustproof and rainproof field case – IP53 rated in closed position
- Grounding standards IEC 61557 parts 4 and 5 compliant
- Includes DataView® software for set up, data storage, real-time display, analysis, report generation and system configuration

#### 4-Point Bond Test



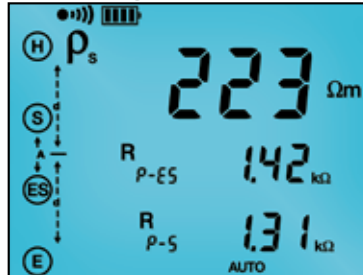
The 4-Point Bond test shows lead connections, bond resistance test results, test voltage and current.

#### 3-Point Fall-of-Potential Test



The 3-Point Fall-of-Potential test displays test lead connection, grounding rod resistance and test electrode resistances.

#### Schlumberger Test



The Schlumberger test displays test lead connection, soil resistivity ( $\rho$ ) test results and electrode spacing.

#### Two Clamp Test



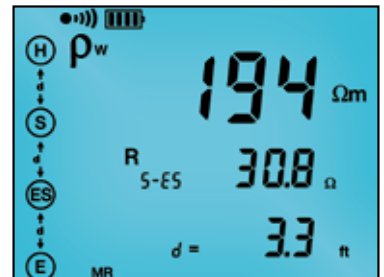
The 2 Clamp method displays clamp connection resistance, test current and frequency.

#### Data Storage



Memory Recall displays test results stored at a specific memory location.

#### Wenner Test



The Wenner test displays test lead connection, soil resistivity ( $\rho$ ) test results, electrode spacing and resistance.

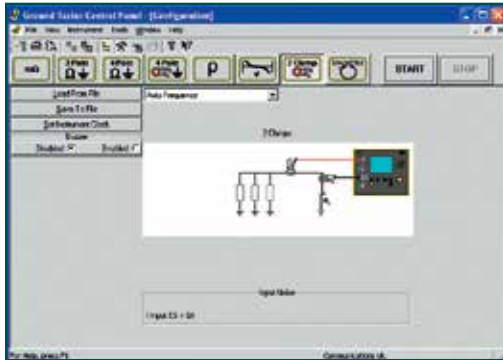
NOTE: More information for each test is available by scrolling through the displays.

CATALOG NO.	DESCRIPTION
2135.48	Ground Resistance Tester Model 6471 (2-Point, 3-Point, 4-Point, Bond Test, Digital, Rechargeable Battery, DataView® software)
2135.49	Ground Resistance Tester Model 6471 (set of two SR182 current probes, 2-Point, 3-Point, 4-Point, Bond Test, Digital, Rechargeable Battery, DataView® software)
2135.50	Ground Resistance Tester Model 6471 Kit – 300 ft (Catalog #2135.49 and Catalog #2135.36)
2135.60	Ground Resistance Tester Model 6471 Kit – 300 ft (Catalog #2135.48 and Catalog #2135.36)
2135.61	Ground Resistance Tester Model 6471 Kit – 500 ft (Catalog #2135.48 and Catalog #2135.37)
<b>Accessories (Optional)</b>	
2135.71*	AC Current Probe Model MN82 for use with Model 6471
2135.72*	AC Current Probe Model SR182 for use with Model 6471
2135.85	Caddy – Set of 2, Reel Caddy for use w/Ground Kit Spools ( <i>available on website storefront</i> )

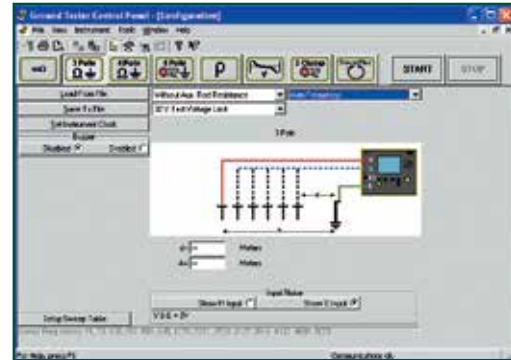
\*2 probes required for two clamp testing method.

## Typical DataView® Functional Displays

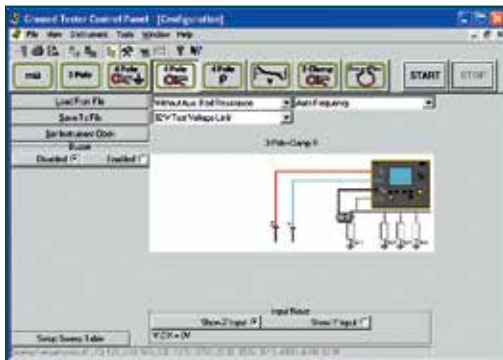
### 2 Clamp Method Setup



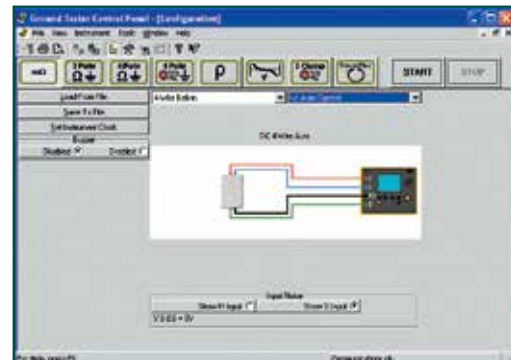
### Fall-of-Potential, Step-Touch Potential



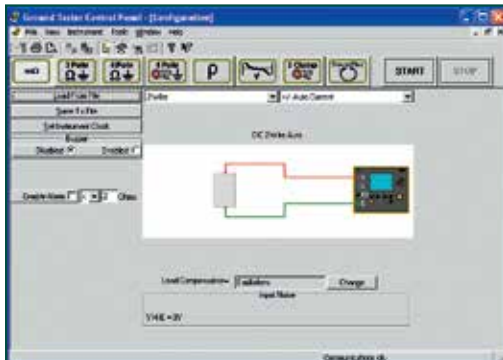
### Selective 3-Point Testing of Multiple Rods



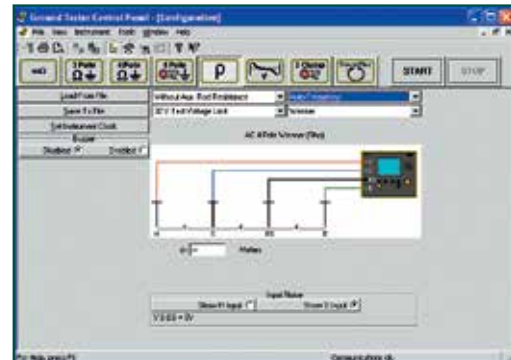
### 4-Point Bonding For Very Low Resistance



### Bonding



### Soil Resistivity



## OPTIONAL KITS

### 150 ft Kit

#### Catalog #2135.35

Test Kit for 3-Point testing includes carrying bag, two 150 ft color-coded leads on spools (red/blue), two 5 ft color-coded leads (red/blue), one 30 ft lead (green), two 14.5" T-shaped auxiliary ground electrodes, one set of five spaded lugs and 100 ft tape measure.



### 300 ft Kit

#### Catalog #2135.36

Test Kit for 4-Point testing includes carrying bag, two 300 ft color-coded leads on spools (red/blue), two 5 ft color-coded leads (red/blue), two 100 ft color-coded leads (green and black), four 14.5" T-shaped auxiliary ground electrodes, one set of five spaded lugs and 100 ft tape measure.



### 500 ft Kit

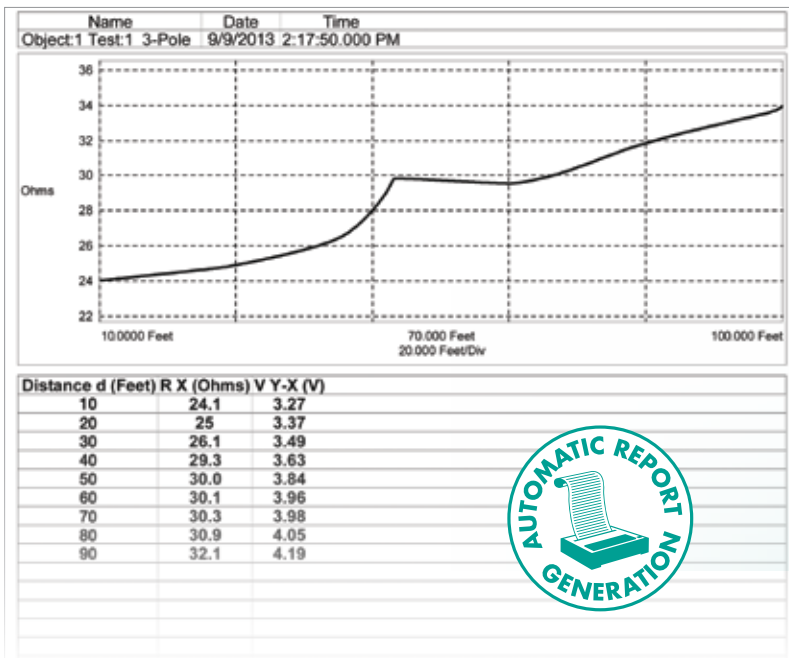
#### Catalog #2135.37

Test Kit for 4-Point testing includes carrying bag, two 500 ft color-coded leads on spools (red/blue), two 5 ft color-coded leads (red/blue), two 100 ft color-coded leads (green and black), one 30 ft lead (green), four 14.5" T-shaped auxiliary ground electrodes, one set of five spaded lugs and 100 ft tape measure.



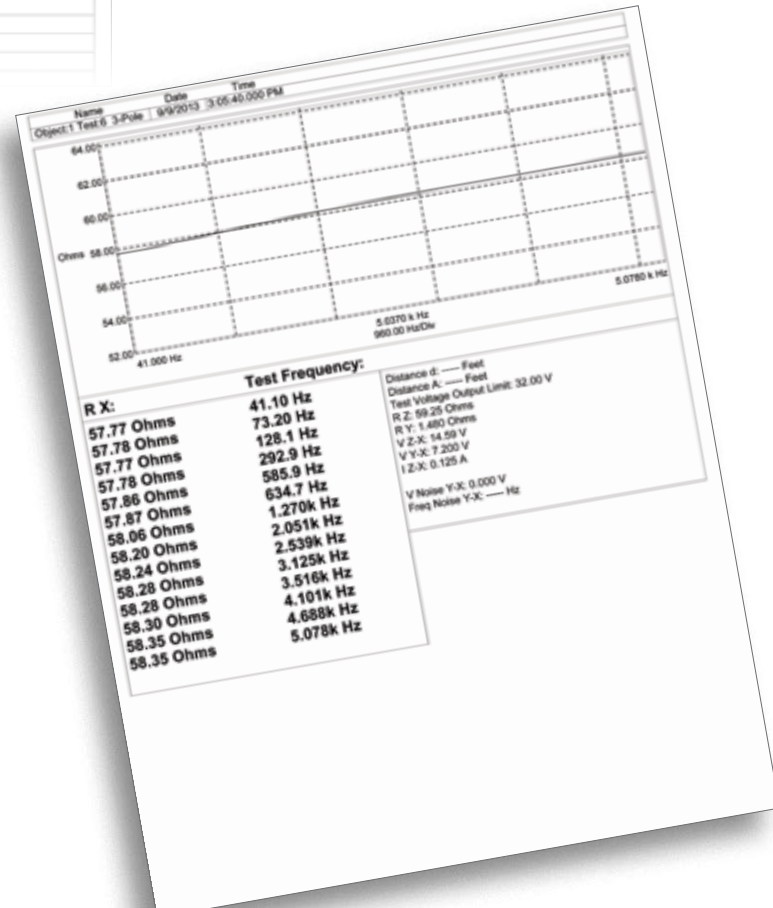
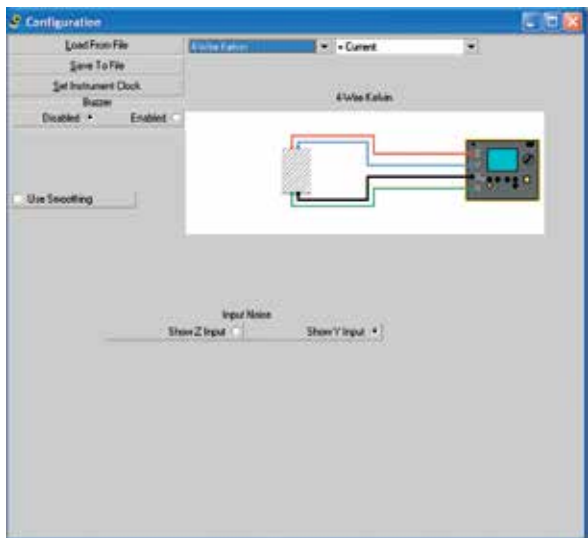
# DataView®

Data Analysis and Reporting Software for Ground Testers



### Configure all functions of the Models 6417, 6471 & 6472

- Run tests and analyze real-time data from your PC
- Configure all test functions and parameters from your PC
- Customize views, templates and reports to your exact needs
- Display Fall-of-Potential plots, tabular listings of test results, resistance vs. frequency plots, soil resistivity and bonding tests
- Print reports using standard or custom templates you design
- Free updates are available on our website [www.aemc.com](http://www.aemc.com)



DataView® software provides a convenient way to configure and control ground resistance tests from your computer. Through the use of clear and easy-to-use tabbed dialog boxes, all ground tester functions can be configured and tests can be initiated. Results can be displayed in real-time and stored in your PC. Reports may be printed along with the operator's comments and analysis.