



SecurePac

ASSET PRESERVATION SYSTEM

PROTECTION FROM MOISTURE INDUCED RUST & CORROSION

PROBLEM: NO OTHER SINGLE ASSET PRESERVATION SYSTEM CREATES A COMPLETELY ENCLOSED, MOISTURE FREE ENVIRONMENT WITH ADDED MOISTURE INHIBITORS TO PREVENT MOISTURE INDUCED RUST & CORROSION FOR ANY TYPE OF ASSET OR VEHICLE.



RAZOR DIMENSIONS:
14.5' L x 5' W x 8' H

A READINESS & SUSTAINMENT SOLUTION: SECUREPAC

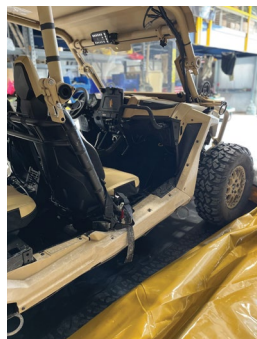
SECUREPAC IS A LIGHT WEIGHT, MOBILE ENCLOSURE THAT PROVIDES A FULLY SEALED ENVIRONMENT THAT PROTECTS ASSETS INSIDE FROM MOISTURE INDUCED RUST & CORROSION, SPECIFICALLY IN WET OR HUMID REGIONS.

Each SecurePac includes a Volatile Corrosion Inhibitor (VCI) System to provide a moisture absorbing capability, removing any trapped moisture in the enclosure after it is sealed. The VCI System also emits a vapor coating to protect all metal surfaces. When utilized properly they can remain in use for up to 2 years before replacement.

SECUREPAC FEATURES & BENEFITS:

- SecurePac encapsulates any size asset preventing ZERO MOISTURE entry once it is completely closed & sealed.
- Each SecurePac is custom made, which reduces excess space surrounding the asset inside & eliminates the need for a large scale storage footprint.
- By including a Volatile Corrosion Inhibitor (VCI) System you create a sealed, moisture-free environment that absorbs any moisture trapped in the enclosure and emits a vapor coating to protect both hidden & visible metal surfaces from exposure to additional moisture.
- SecurePacs are a light weight, long term, low-cost solution for asset protection compared to other methods available in the market today.

SPRZ-1: MRZR ALFA SECUREPAC





MRZR ALFA SECUREPAC: PART DESCRIPTION & ITEM LIST


P/N	PART DESCRIPTION	U/I	QTY
SPRZ-1	MRZR ALFA SECUREPAC: LONG TERM STORAGE ENCLOSURE, INCL MATTING AND VCI PRESERVATIVE W/ MOISTURE ABSORBING ADDITIVE (2 YRS ADDITIVE COVERAGE)	EA	1
512742-64GOV-30	RATCHET STRAPS: BERRY COMPLIANT	EA	2
70E-22X32-COVER	INTERIOR PROTECTIVE COVER: BERRY COMPLIANT, PROTECTS SECUREPAC FROM POINTED AND SHARP SURFACES ON THE ENCLOSED ASSET	EA	1
70E-RAT-SLV	RATCHET PROTECTIVE SLEEVE: BERRY COMPLIANT	EA	2
70E-SPRZRK	ENCLOSURE REPAIR KIT	EA	1
70E-DOC-SLV	EXTERIOR CLEAR WINDOW: ASSET DOCUMENTATION ENCLOSURE	EA	1
S-14246	TRI-WALL BOX SHIPPER: PACKAGING, BOX, ½" THICK CARDBOARD, 48" X 48" X 48", W/ LID [FOR DELIVERY]	EA	1
IMPORTANT NOTE: PART LIST AND DESCRIPTIONS ARE SUBJECT TO CHANGE BASED ON SPECIFIC ASSET REQUIREMENTS. OPTIONAL JACK STANDS AND JACK PLATES ARE AVAILABLE AS ADD-ONS.			

**STEP-BY-STEP
ASSEMBLY
INSTRUCTIONS:
MRZR ALFA
SECUREPAC KIT**

Available Resources:

 [Outdoor Use \(PDF\)](#)

 [Indoor Use \(PDF\)](#)

 [Step-by-Step Video](#)

VISUAL REFERENCE DETAILS:



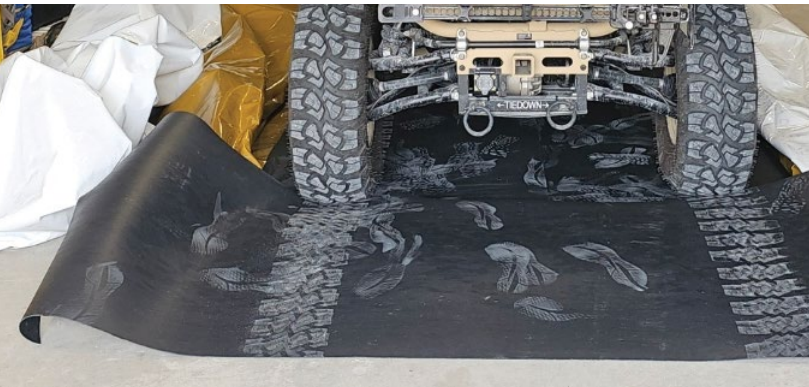
RATCHET STRAPS



EXTERIOR GROUND MATS



MRZR ALFA SECUREPAC



RAMP MAT



INTERIOR TRACK MATS



ASSORTMENT:
VCI PRESERVATIVE,
CLEAR DOCUMENT
WINDOW &
ENCLOSURE
REPAIR KIT

TRI-WALL BOX
SHIPPER



DESIGNED & KITTED BY:



135 Sparks Ave. • Butler, PA 16001

OUR MISSION IS PROBLEM SOLVING

Contact our 70E Solutions Government Support Team Today!

Phone: 724.789.7246 x 1600 | E-mail: Government@70esolutions.com